



Models: 100 Series, 200 Series, 400/500 Series, 700 Series, 800 Series, 3600 Series, 4200 (MPS) Series & 6900 Series

New Parts to fit CASTLE/GETINGE

CASTLE/GETINGE

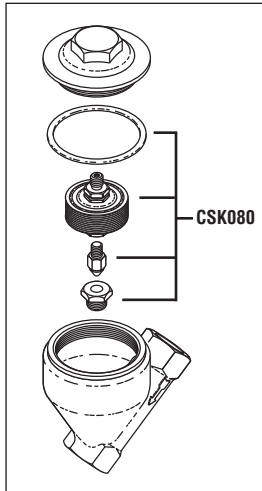
RPI Part #CST079
OEM Part #61301603751



STEAM TRAP

- 3/4" FPT
- Includes all parts as shown
- Also available: Steam Trap Rebuild Kit (RPI Part #CSK080)

Models: 200 Series



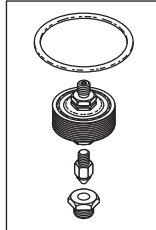
RPI Part #CSK080
OEM Part #61301603755



STEAM TRAP REBUILD KIT

- Includes all parts as shown

Models: 200 Series



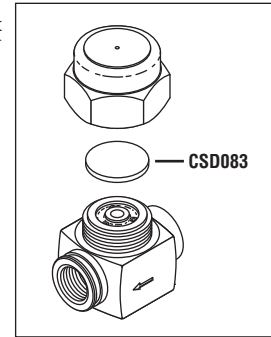
RPI Part #CST082
OEM Part #68722



STEAM TRAP

- 3/8" FPT
- Includes all parts as shown
- Also available: Replacement Disc (RPI Part #CSD083)

Models: 400/500 Series, 700 Series & 4200 (MPS) Series

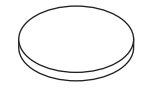


RPI Part #CSD083
OEM Part # (No OEM Part # Available)



REPLACEMENT DISC

Models: 400/500 Series, 700 Series & 4200 (MPS) Series



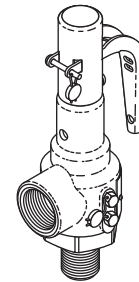
(Top View Shown)

RPI Part #CSV084
OEM Part #61301608100



SAFETY VALVE (45 PSI)

- 1/2" MPT x 1/2" FPT
- Models:** 400/500 Series & 700 Series



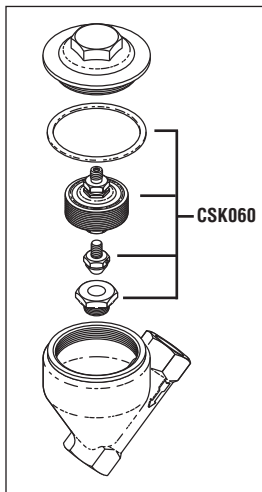
RPI Part #CST081
OEM Part #23614



STEAM TRAP

- 3/4" FPT
- Includes all parts as shown
- Also available: Steam Trap Rebuild Kit (RPI Part #CSK060)

Models: 200 Series, 3600 Series, 4200 (MPS) Series & 6900 Series

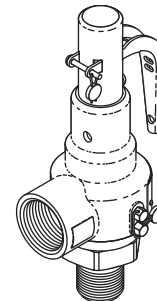


RPI Part #CSV085
OEM Part #61301601576



SAFETY VALVE (45 PSI)

- 3/4" MPT x 3/4" FPT
- Models:** 200 Series, 800-42" & 800-76"

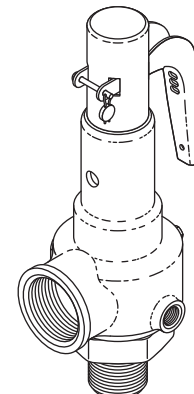


RPI Part #CSV086
OEM Part #56916



SAFETY VALVE (40 PSI)

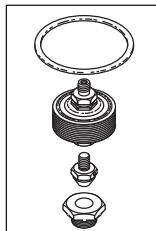
- 1" MPT x 1-1/4" FPT
- Models:** 4200 (MPS) Series



RPI Part #CSK060
OEM Part #27557

STEAM TRAP REBUILD KIT

- Includes all parts as shown
- Models:** 200 Series, 3600 Series, 4200 (MPS) Series & 6900 Series



replacement parts industries, inc.

CALL (800) 221-9723 • FAX (818) 882-7028 • EMAIL order@rpiparts.com • WEBSITE www.rpiparts.com

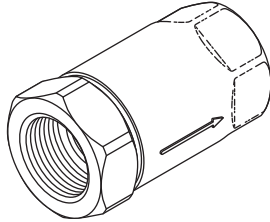
The above parts are manufactured by Replacement Parts Industries, Inc. to fit Castle/Getinge equipment. All product names used in this document are trademarks or registered trademarks of their respective holders. Web 09/11

Bulk Sterilizers

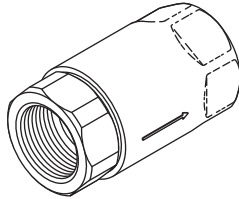
Models: 100 Series, 200 Series, 400/500 Series, 700 Series, 800 Series, 3600 Series, 4200 (MPS) Series & 6900 Series

New Check Valves to fit CASTLE/GETINGE

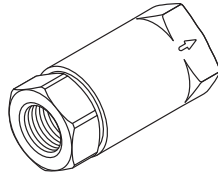
RPI Part #CSV074
OEM Part #14882
CHECK VALVE (1-1/4")
• 1-1/4" FPT
Models: 6900 Series



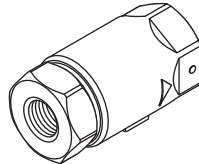
RPI Part #CSV075
OEM Part #21815
CHECK VALVE (1")
• 1" FPT
Models: 6900 Series



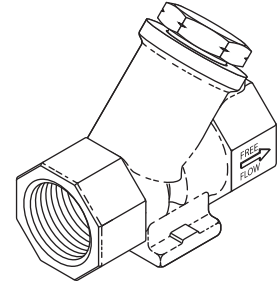
RPI Part #CSV076
OEM Part #19112
CHECK VALVE (3/8")
• 3/8" FPT
Models: 6900 Series



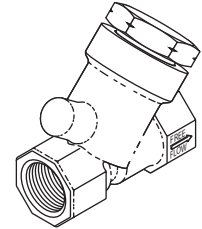
RPI Part #CSV078
OEM Part #66838
CHECK VALVE (1/4")
• 1/4" FPT
Models: 6900 Series



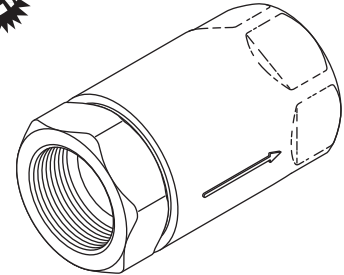
RPI Part #CSV071
OEM Part #513363
CHECK VALVE (3/4")
• 3/4" FPT
Models: 100 Series, 200 Series,
400/500 Series, 700 Series, 800-42",
800-76" & 4200 (MPS) Series



RPI Part #CSV073
OEM Part #513361
CHECK VALVE (3/8")
• 3/8" FPT
Models: 100 Series, 200 Series, 400/500
Series, 700 Series, 800-42" & 800-76"



RPI Part #CSV077
OEM Part #61301602477
CHECK VALVE (1-1/2")
• 1-1/2" FPT
Models: 4200 (MPS) Series



Look inside for new
Check Valves, Safety Valves,
and Steam traps to fit
Castle/Getinge Bulk Sterilizers!

ADDRESS SERVICES REQUESTED

PRESORTED STANDARD
U.S. POSTAGE PAID
VAN NUYS, CA
PERMIT NO. 2399

replacement parts industries, inc.
20338 Corisco Street • Chatsworth, California • 91311

