



MORE NEW PARTS TO FIT DENTAL VACUUM UNITS!...



DENTAL VACUUM UNITS -

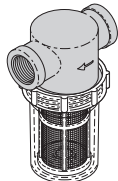
Air Techniques, Apollo/Midmark®, DentalEZ®/Custom Air/RamVac, Matrix/Midmark®, Midmark®, & Tech West

RPI Part #VPC069
OEM Part # See Chart on Back Page



SOLIDS COLLECTOR (3/4")

- Ports: 3/4" FPT
 - Material: Black plastic body with clear plastic bowl
 - Includes: Bowl, Bowl Gasket (RPI Part #VPG080) and Screen (50 Mesh) (RPI Part #VPS076)
- Fits:** Manifold Assembly

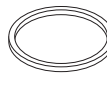


RPI Part #VPG080
OEM Part # See Chart on Back Page



BOWL GASKET

- 3 per package
 - Material: Buna N (Nitrile)
 - Size: 2.23" OD x .13" Square
- Fits:** Solids Collector Assembly (3/4")



RPI Part #VPS076
OEM Part # See Chart on Back Page



SCREEN (50 MESH)

- Material: Stainless steel screen; Blue plastic cage
 - Size: 1.73" OD x 3.77" lg.
- Fits:** Solids Collector (3/4")



RPI Part #VPK072
OEM Part # See Chart on Back Page



SOLIDS COLLECTOR REPLACEMENT KIT

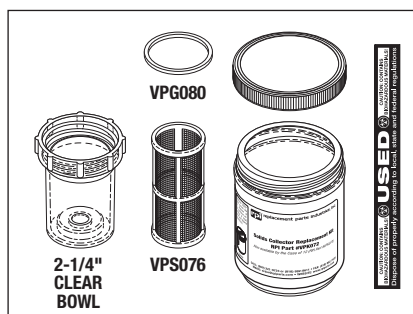
- Includes all parts as shown
- Fits:** Solids Collector Assembly 3/4"

ALSO AVAILABLE BY THE CASE!

RPI Part #VPK073
OEM Part # See Chart on Back Page

SOLIDS COLLECTOR REPLACEMENT KIT (CASE of 12)

- Includes: (12) Solids Collector Replacement Kits (RPI Part #VPK072)

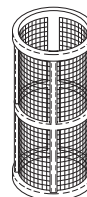


RPI Part #VPS077
OEM Part # See Chart on Back Page



SCREEN (20 MESH)

- Material: Stainless steel screen; Red plastic cage
 - Size: 1.73" OD x 3.77" lg.
- Fits:** Solids Collector (3/4")

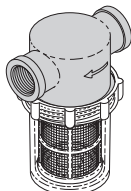


RPI Part #VPC070
OEM Part # See Chart on Back Page



SOLIDS COLLECTOR (1")

- Ports: 1" FPT
 - Material: Black plastic body with clear plastic bowl
 - Includes: Bowl, Bowl Gasket (RPI Part #VPG081) and Screen (20 Mesh) (RPI Part #VPS079)
- Fits:** Manifold Assembly

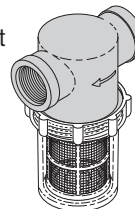


RPI Part #VPC071
OEM Part # See Chart on Back Page



SOLIDS COLLECTOR (1-1/4")

- Ports: 1-1/4" FPT
 - Material: Black plastic body with clear plastic bowl
 - Includes: Bowl, Bowl Gasket (RPI Part #VPG081) and Screen (20 Mesh) (RPI Part #VPS079)
- Fits:** Manifold Assembly

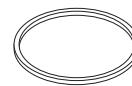


RPI Part #VPG081
OEM Part # See Chart on Back Page



BOWL GASKET

- 3 per package
 - Material: Buna N (Nitrile)
 - Size: 3.13" OD x .13" Square
- Fits:** Solids Collector Assembly (1" & 1-1/4")



RPI Part #VPS078
OEM Part # See Chart on Back Page



SCREEN (50 MESH)

- Material: Stainless steel screen, Blue pastic cage
 - Size: 2.47" OD x 4.25" lg.
- Fits:** Solids Collector (1") and (1-1/4")



RPI Part #VPK074
OEM Part # See Chart on Back Page



SOLIDS COLLECTOR REPLACEMENT KIT

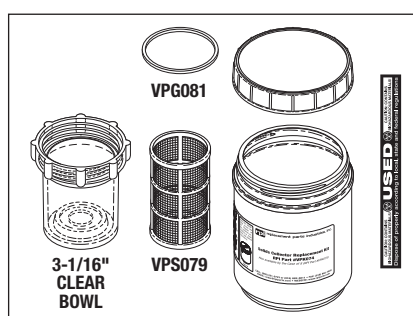
- Includes all parts as shown
- Fits:** Solids Collector Assembly 1" and 1-1/4"

ALSO AVAILABLE BY THE CASE!

RPI Part #VPK075
OEM Part # See Chart on Back Page

SOLIDS COLLECTOR REPLACEMENT KIT (CASE of 8)

- Includes: (8) Solids Collector Replacement Kits (RPI Part #VPK074)

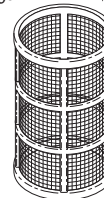


RPI Part #VPS079
OEM Part # See Chart on Back Page



SCREEN (20 MESH)

- Material: Stainless steel screen; Red plastic cage
 - Size: 2.47" OD x 4.25" lg.
- Fits:** Solids Collector (1") and (1-1/4")



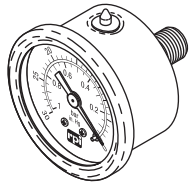
For more information about the parts listed in this flyer, see our website www.rpiparts.com



replacement parts industries, inc.

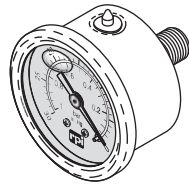
CALL (800) 221-9723 • FAX (818) 882-7028 • EMAIL order@rpiparts.com • WEBSITE www.rpiparts.com

The above parts are manufactured by Replacement Parts Industries, Inc. to fit the equipment noted. All product names used in this document are trademarks or registered trademarks of their respective holders. Show 06/15 Updated 07/15



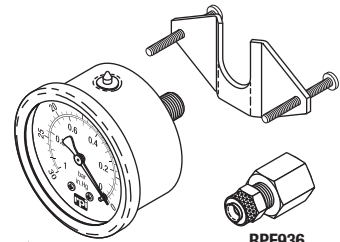
RPI Part #GOG046
OEM Part # See Chart on Back Page

- VACUUM GAUGE**
- Size: 1-1/2" dia.
 - Dual Scale: 0 to 30 In. Hg (0 to 1 Bar)
 - Material: Stainless steel case and bezel
 - Port: 1/8" MPT center back mount
- Fits:** Manifold Assembly



RPI Part #VPG044
OEM Part # See Chart on Back Page

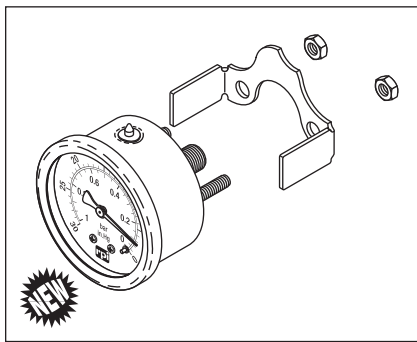
- VACUUM GAUGE (LIQUID FILLED)**
- Size: 1-1/2" dia.
 - Dual Scale: 0 to 30 In. Hg (0 to 1 Bar)
 - Material: Stainless steel case and bezel
 - Port: 1/8" MPT center back mount
- Fits:** Manifold Assembly



RPF936

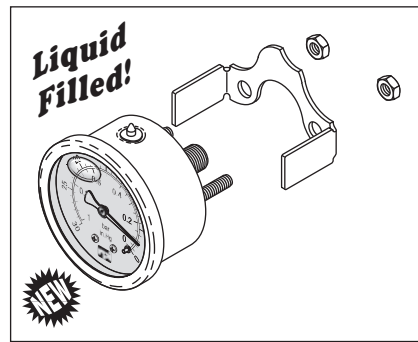
RPI Part #VPG094
OEM Part # See Chart on Back Page

- VACUUM GAUGE**
- Size: 2.0" dia.
 - Dual Scale: 0 to 30 In. Hg (0 to 1 Bar)
 - Material: Stainless steel case and bezel
 - Port: 1/4" MPT center back mount
- Fits:** Manifold Assembly



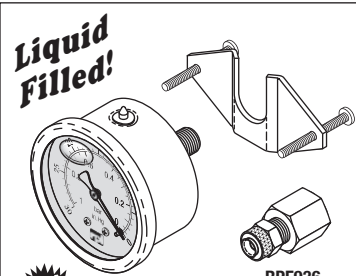
RPI Part #VPG045
OEM Part # See Chart on Back Page

- VACUUM GAUGE**
- Size: 2.0" dia.
 - Dual Scale: 0 to 30 In. Hg (0 to 1 Bar)
 - Material: Stainless steel case and bezel
 - Port: 1/8" MPT center back mount
- Fits:** Manifold Assembly



RPI Part #VPG046
OEM Part # See Chart on Back Page

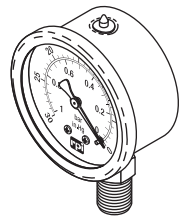
- VACUUM GAUGE (LIQUID FILLED)**
- Size: 2.0" dia.
 - Dual Scale: 0 to 30 In. Hg (0 to 1 Bar)
 - Material: Stainless steel case and bezel
 - Port: 1/8" MPT center back mount
- Fits:** Manifold Assembly



RPF936

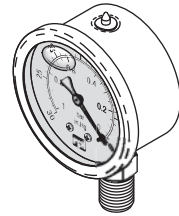
RPI Part #VPG095
OEM Part # See Chart on Back Page

- VACUUM GAUGE (LIQUID FILLED)**
- Size: 2.0" dia.
 - Dual Scale: 0 to 30 In. Hg (0 to 1 Bar)
 - Material: Stainless steel case and bezel
 - Port: 1/4" MPT center back mount
- Fits:** Manifold Assembly



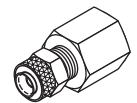
RPI Part #VPG047
OEM Part # See Chart on Back Page

- VACUUM GAUGE**
- Size: 2.0" dia.
 - Dual Scale: 0 to 30 In. Hg (0 to 1 Bar)
 - Material: Stainless steel case and bezel
 - Ports: 1/4" MPT bottom mount
- Fits:** Manifold Assembly



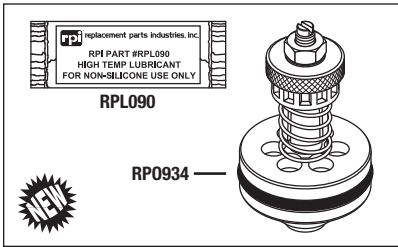
RPI Part #VPG048
OEM Part # See Chart on Back Page

- VACUUM GAUGE (LIQUID FILLED)**
- Size: 2.0" dia.
 - Dual Scale: 0 to 30 In. Hg (0 to 1 Bar)
 - Material: Stainless steel case and bezel
 - Port: 1/4" MPT bottom mount
- Fits:** Manifold Assembly



RPI Part #RPF936
OEM Part # See Chart on Back Page

- FEMALE CONNECTOR**
(1/4" POLY x 1/4" FPT)
- 2 per package
 - Size: 1/4" Polyflo x 1/4" FPT
 - Material: Brass
- Fits:** Vacuum Gauge

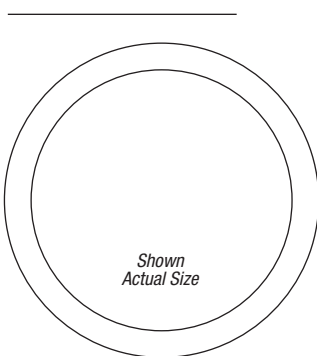


RPI Part #VPV059
OEM Part # See Chart on Back Page

VACUUM RELIEF VALVE

- Includes all parts as shown
- Also available: Filter Element and Screen (RPI Part #VPE064)

Fits: Manifold Assembly

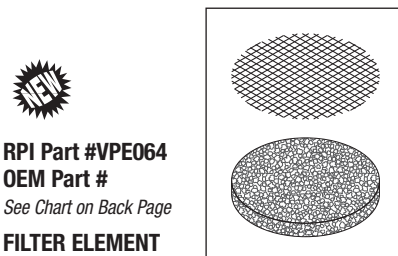


RPI Part #RP0934
OEM Part # See Chart on Back Page
Industry Part #AS578-220

O-RING

- 3 per package
- Size: 1.359" ID x 1.637" OD x .139" C/S
- Material: Buna-N (Nitrile), 70 Duro

Fits: Vacuum Relief Valve



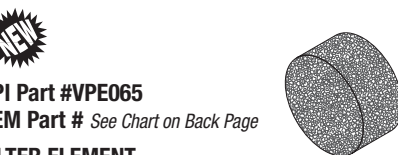
RPI Part #VPE064
OEM Part #

See Chart on Back Page

FILTER ELEMENT AND SCREEN

- Size: 1.88" OD x .25" thk. foam filter
- Includes: PM sticker

Fits: Vacuum Relief Valve Assembly



RPI Part #VPE065
OEM Part # See Chart on Back Page

FILTER ELEMENT

- Size: 2.00" OD x 1.00" lg. foam filter
- Includes: PM sticker

Fits: Vacuum Relief Valve Assembly



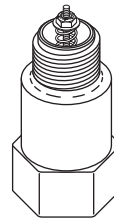
RPI Part #VPV063
OEM Part #

See Chart on Back Page

VACUUM RELIEF VALVE (3/4")

- 3/4" FPT x 3/4" MPT
- Material: Grey PVC body; EPDM seal
- Preset @ approx. 5 lb (adjustable)
- Adjusting nut 1-1/2 turn = 1 lb. force
- Also available: Filter Element (RPI Part #VPE068)

Fits: Manifold Assembly



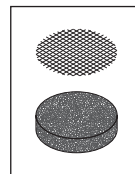
RPI Part #VPE068
OEM Part #

See Chart on Back Page

FILTER ELEMENT AND SCREEN

- Size: .88" OD x .25" lg.
- Includes: PM sticker

Fits: Vacuum Relief Valve Assembly



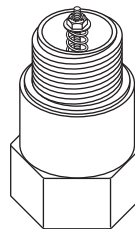
RPI Part #VPV060
OEM Part #

See Chart on Back Page

VACUUM RELIEF VALVE (1")

- 1" FPT x 1" MPT
- Material: White PVC body; EPDM seal
- Preset @ approx. 5 lb (adjustable)
- Adjusting nut 1-1/2 turn = 1 lb. force
- Also available: Foam Element (RPI Part #CMF013)

Fits: Manifold Assembly

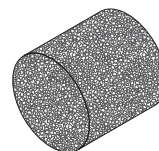


RPI Part #CMF013
OEM Part # See Chart on Back Page

FILTER ELEMENT

- Size: 2.00" OD x 2.00" lg. foam filter
- Includes: PM sticker

Fits: Vacuum Relief Valve Assembly



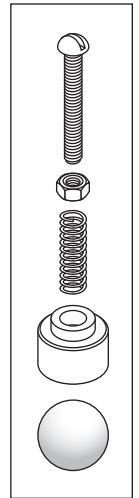
RPI Part #VPK062
OEM Part #

See Chart on Back Page

VACUUM RELIEF VALVE REPAIR KIT

- Includes all parts as shown
- Allows customer to rebuild the Dental-EZ Vacuum Relief Valve (OEM Part #64622001)
- Also available: Filter Element and Screen (RPI Part #VPE067)

Fits: Vacuum Relief Valve



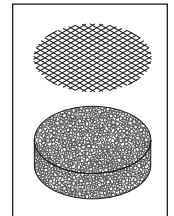
RPI Part #VPE067
OEM Part #

See Chart on Back Page

FILTER ELEMENT AND SCREEN

- Size: 1.65" OD x .50" lg. foam filter
- Includes: PM sticker
- Also available: Vacuum Relief Valve Repair Kit (RPI Part #VPK062) and Filter Assembly (RPI Part #VPF066)

Fits: Filter Assembly



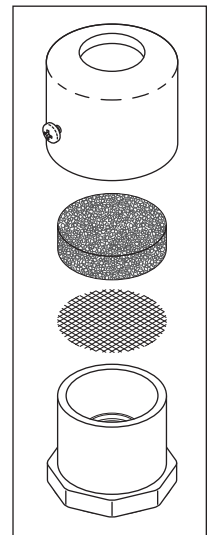
RPI Part #VPF066
OEM Part #

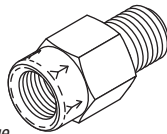
See Chart on Back Page

FILTER ASSEMBLY

- Material: PVC housing
- Also available: Filter Element and Screen (RPI Part #VPE067)

Fits: Vacuum Relief Valve

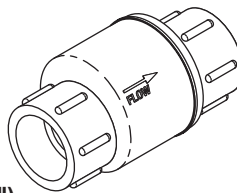




RPI Part #VPV057
OEM Part # See Chart on Back Page

CHECK VALVE (1/4" IN-LINE)

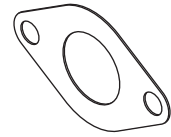
- Cracking Pressure: 1.0 PSI
 - Ports: 1/4" FPT Inlet x 1/4" MPT Outlet
 - Material: Brass body, Buna-N (Nitrile) seal
- Fits:** Manifold Assembly



RPI Part #VPV058
OEM Part # See Chart on Back Page

CHECK VALVE (3/4")

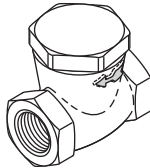
- Ports: 3/4" Slip x 3/4" Slip Schedule 40
 - Material: White PVC plastic
- Fits:** Manifold Assembly



RPI Part #VPG039
OEM Part # See Chart on Back Page

MANIFOLD GASKET

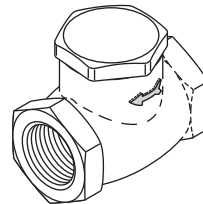
Fits: Manifold Assembly



RPI Part #VPV055
OEM Part # See Chart on Back Page

CHECK VALVE (3/8")

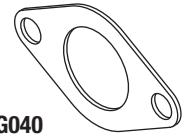
- Ports: 3/8" FPT
 - Material: Bronze body
 - The RPI Check Valve is a rebuildable valve with a Buna-N (Nitrile) seal - It's the RPI Advantage!
 - Also available: Check Valve Repair Kit (RPI Part #VPK050)
- Fits:** Manifold Assembly



RPI Part #VPV051
OEM Part # See Chart on Back Page

CHECK VALVE (3/4")

- Ports: 3/4" FPT
 - Material: Bronze body
 - The RPI Check Valve is a rebuildable valve with a Buna-N (Nitrile) seal - It's the RPI Advantage!
 - Also available: Check Valve Repair Kit (RPI Part #VPK052)
- Fits:** Manifold Assembly



RPI Part #VPG040
OEM Part # See Chart on Back Page

MANIFOLD GASKET

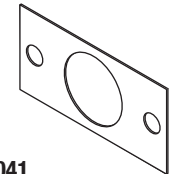
Fits: Manifold Assembly



RPI Part #VPK052
OEM Part # See Chart on Back Page

CHECK VALVE REPAIR KIT (3/4")

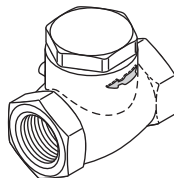
- Material: Buna-N (Nitrile) seat
- Fits: Only Fits** RPI's Check Valve (3/4") (RPI Part #VPV051)



RPI Part #VPG041
OEM Part # See Chart on Back Page

MANIFOLD GASKET

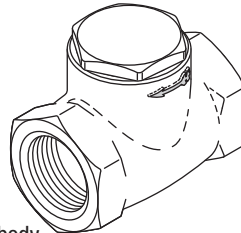
Fits: Manifold Assembly



RPI Part #VPV049
OEM Part # See Chart on Back Page

CHECK VALVE (1/2")

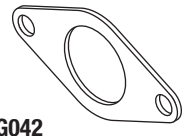
- Ports: 1/2" FPT
 - Material: Bronze body
 - The RPI Check Valve is a rebuildable valve with a Buna-N (Nitrile) seal - It's the RPI Advantage!
 - Also available: Check Valve Repair Kit (RPI Part #VPK050)
- Fits:** Manifold Assembly



RPI Part #VPV053
OEM Part # See Chart on Back Page

CHECK VALVE (1")

- Ports: 1" FPT
 - Material: Bronze body
 - The RPI Check Valve is a rebuildable valve with a Buna-N (Nitrile) seal - It's the RPI Advantage!
 - Also available: Check Valve Repair Kit (RPI Part #VPK054)
- Fits:** Manifold Assembly



RPI Part #VPG042
OEM Part # See Chart on Back Page

MANIFOLD GASKET

Fits: Manifold Assembly



RPI Part #VPK050
OEM Part # See Chart on Back Page

CHECK VALVE REPAIR KIT (1/2" & 3/8")

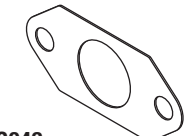
- Material: Buna-N (Nitrile) seal
- Fits: Only Fits** Check Valve (1/2") (RPI Part #VPV049) and Check Valve (3/8") (RPI Part #VPV055)



RPI Part #VPK054
OEM Part # See Chart on Back Page

CHECK VALVE REPAIR KIT (1")

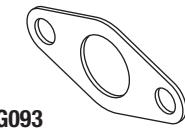
- Material: Buna-N (Nitrile) seat
- Fits: Only Fits** RPI's Check Valve (1") (RPI Part #VPV053)



RPI Part #VPG043
OEM Part # See Chart on Back Page

MANIFOLD GASKET

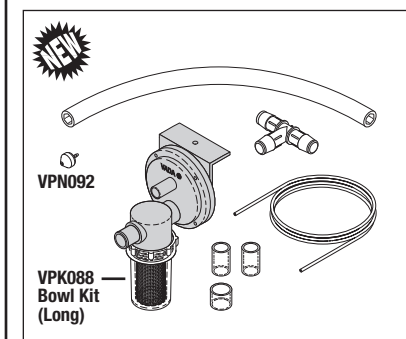
Fits: Manifold Assembly



RPI Part #VPG093
OEM Part # See Chart on Back Page

MANIFOLD GASKET

Fits: Manifold Assembly



RPI Part #VPV083
OEM Part # See Chart on Back Page

CUSPIDOR DRAIN VALVE (VADA TRAP)

- Automatic drain for dental cuspidor
- Connects to central vacuum system and eliminates conventional plumbing drain
- Allows installation where a gravity drain is not available or practical
- Includes all parts as shown
- Included in: Sink Drain Valve Assembly (RPI Part #VPK082)

Fits: Dental Cuspidors

Note: Adapts all OEM dental delivery cuspidors to a central vacuum line when there is not a normal gravity drain available.

RPI Part #VPN092
OEM Part # See Chart on Back Page

CLEAN OUT-NIPPLE

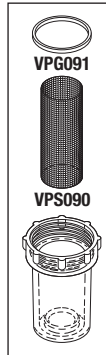
- Material: Black plastic tip with 1/16" barb

Fits: Vada Trap

RPI Part #VPK088
OEM Part # See Chart on Back Page

BOWL KIT (LONG)

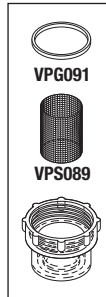
- Includes all parts as shown
 - Bowl Height: 2.67" tall
- Fits:** Sink and Cuspidor Drain Valve Assemblies (Vada Trap) Serial Number 00001 and After



RPI Part #VPK087
OEM Part # See Chart on Back Page

BOWL KIT (SHORT)

- Includes all parts as shown
 - Bowl Height: 1.34" tall
- Fits:** Sink and Cuspidor Drain Valve Assemblies Manufactured Before September 1997 and All Units Without Serial Numbers



RPI Part #VPG091
OEM Part # See Chart on Back Page

BOWL GASKET

- 3 per package
- Material: Silicone rubber
- Size: 1.43" OD x 1.28" ID x .11" thk

Fits: Sink and Cuspidor Drain Valve Assembly

RPI Part #VPS090
OEM Part # See Chart on Back Page

SCREEN (LONG)

- Size: 1" dia. x 2.62" lg.
 - Material: 20 Mesh stainless steel
- Fits:** Sink and Cuspidor Drain Valve Assemblies (Vada Trap) Serial #00001 and After
-

RPI Part #VPS089
OEM Part # See Chart on Back Page

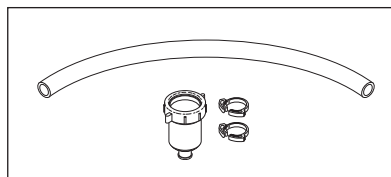
SCREEN (SHORT)

- Size: 1" dia. x 1.34" lg.
 - Material: 20 Mesh stainless steel
- Fits:** Sink and Cuspidor Drain Valve Assemblies (Vada Trap) Manufactured Before September 1997 and All Units Without Serial Numbers
-

RPI Part #VPA084
OEM Part # See Chart on Back Page

SINK ADAPTOR

- Connects to 1-1/2" sink drain tailpiece and reduces to 5/8" tubing connector to connect to vacuum system
 - Includes all parts as shown
 - Included in: Sink Drain Valve Assembly (RPI Part #VPK082)
- Fits:** Standard or Operator Sinks



RPI Part #VPD085
OEM Part # See Chart on Back Page

DIAPHRAGM

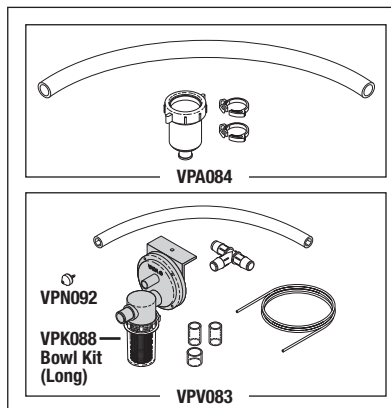
- Material: Silicone rubber
- Size: 3" dia. with four mounting holes

Fits: Sink and Cuspidor Drain Valve Assemblies (Vada Trap) and Units Without Serial Numbers

RPI Part #VPK082
OEM Part # See Chart on Back Page

SINK DRAIN VALVE ASSEMBLY

- Automatic drain for standard or operator sink 1-1/2" tailpiece
 - Connects to central vacuum system and eliminates conventional plumbing drain
 - Allows installation where a gravity drain is not available or practical
 - Includes: Sink Adapter (RPI Part #VPA084) and Cuspidor Drain Valve (RPI Part #VPV083)
 - Also available: Diaphragm (RPI Part #VPD086) and Bowl Kit (Long) (RPI Part #VPK088)
- Fits:** Standard or Operator Sinks



RPI Part #VPD086
OEM Part # See Chart on Back Page

DIAPHRAGM

- Material: Silicone rubber
- Size: 2-9/16" dia. without mounting holes
- Also available: Sink Drain Valve Assembly (RPI Part #VPK082) and Cuspidor Drain Valve (RPI Part #VPV083)

Fits: Sink and Cuspidor Drain Valve Assemblies (Vada Trap) Serial Number 0001 and above (Including All Vada Traps Sold By RPI)

Note: Adapts all OEM sinks to a central vacuum line when there is not a normal gravity drain available.



replacement parts industries, inc.

20338 Corisco Street • Chatsworth, California • 91311

PRESORTED STANDARD
U.S. POSTAGE PAID
VAN NUYS, CA
PERMIT NO. 2399

ADDRESS SERVICES REQUESTED

List of New RPI Parts to fit Dental Vacuum Units

See our website www.rpiparts.com for specific models these parts fit!

RPI Part #	Description	Air Techniques	Apollo/Midmark®	DentalEZ®/Custom Air/RamVac	Matrix/Midmark®	Midmark®	Tech West	Vada Traps
CMF013	Filter Element		20207400 & 202047500					
GOG046	Vacuum Gauge	55616			62947800	62947800		
RPF936	Female Connector (1/4" Poly x 1/4" FPT) - 2/pkg			No OEM Part # Available				
RPO934	O-ring - 3/pkg	No OEM Part # Available						
VPA084	Sink Adaptor							No OEM Part # Available
VPC069	Solids Collector (3/4")	55862	PCC50705	64545040	62937301	62937301	VFA-40	
VPC070	Solids Collector (1")		PCV50706	64501940		77005147		
VPC071	Solids Collector (1-1/4")	55612	PCV50708		77005155	77005155		
VPD085	Diaphragm							No OEM Part # Available
VPD086	Diaphragm							No OEM Part # Available
VPE064	Filter Element and Screen	55713						
VPE065	Filter Element				62935604	62935604		
VPE067	Filter Element and Screen			64568145				
VPE068	Filter Element and Screen						No OEM Part # Available	
VPF066	Filter Assembly			64568159				
VPG039	Manifold Gasket	55617						
VPG040	Manifold Gasket				61203200	61203200		
VPG041	Manifold Gasket		MMS71167					
VPG042	Manifold Gasket			64568137				
VPG043	Manifold Gasket						MG-100	
VPG044	Vacuum Gauge (Liquid Filled)	55616			62947800	62947800		
VPG045	Vacuum Gauge	55680						
VPG046	Vacuum Gauge (Liquid Filled)	55680						
VPG047	Vacuum Gauge		014-0550-00	64568188				
VPG048	Vacuum Gauge (Liquid Filled)		014-0550-00	64568188			VPG-100	
VPG080	Bowl Gasket - 3/pkg	55625		No OEM Part # Available	77007018	77007018	VFG-100	
VPG081	Bowl Gasket - 3/pkg	No OEM Part # Available	MRP70936	No OEM Part # Available	77005158	77005158		
VPG091	Bowl Gasket							No OEM Part # Available
VPG093	Manifold Gasket		MMS71165					
VPG094	Vacuum Gauge			64568134				
VPG095	Vacuum Gauge (Liquid Filled)			64568134				
VPK050	Check Valve Repair Kit (1/2" & 3/8")		No OEM Part # Available	No OEM Part # Available				
VPK052	Check Valve Repair Kit (3/4")	No OEM Part # Available	No OEM Part # Available	No OEM Part # Available	No OEM Part # Available	No OEM Part # Available		
VPK054	Check Valve Repair Kit (1")	No OEM Part # Available	No OEM Part # Available	No OEM Part # Available				
VPK062	Vacuum Relief Valve Repair Kit			No OEM Part # Available				
VPK072	Solids Collector Replacement Kit	55880	AVA60001	No OEM Part # Available	77005167	77005167	VFB-100	
VPK073	Solids Collector Replacement Kit (Case of 12)	No OEM Part # Available	No OEM Part # Available	No OEM Part # Available	77005177	77005177	No OEM Part # Available	
VPK074	Solids Collector Replacement Kit	55094	AVA600012	64568122	77005180	77005180		
VPK075	Solids Collector Replacement Kit (Case of 8)	No OEM Part # Available	No OEM Part # Available	No OEM Part # Available	77005181 & 77005178	77005181 & 77005178		
VPK082	Sink Drain Valve Assembly							45R062
VPK087	Bowl Kit (Short)							No OEM Part # Available
VPK088	Bowl Kit (Long)							No OEM Part # Available
VPN092	Clean Out-Nipple							No OEM Part # Available
VPS076	Screen (50 Mesh)	No OEM Part # Available	No OEM Part # Available	No OEM Part # Available	No OEM Part # Available	No OEM Part # Available	No OEM Part # Available	
VPS077	Screen (20 Mesh)	No OEM Part # Available	No OEM Part # Available	No OEM Part # Available	No OEM Part # Available	No OEM Part # Available	No OEM Part # Available	
VPS078	Screen (50 Mesh)	No OEM Part # Available	No OEM Part # Available	No OEM Part # Available	No OEM Part # Available	No OEM Part # Available	No OEM Part # Available	
VPS079	Screen (20 Mesh)	No OEM Part # Available	No OEM Part # Available	No OEM Part # Available	77005079	77005079		
VPS089	Screen (Short)							No OEM Part # Available
VPS090	Screen (Long)							No OEM Part # Available
VPV049	Check Valve (1/2")		PW50656					
VPV051	Check Valve (3/4")	56105	PW50657	64568191	770002003	770002003		
VPV053	Check Valve (1")		PW50658	64568193				
VPV055	Check Valve (3/8")			64622311				
VPV057	Check Valve (1/4" In-Line)	56056						
VPV058	Check Valve (3/4")						CVF-750	
VPV059	Vacuum Relief Valve	55865						
VPV060	Vacuum Relief Valve (1")		PVV85980 & PVV85981					
VPV063	Vacuum Relief Valve (3/4")						VRV-100	
VPV083	Cuspidor Drain Valve (Vada Trap)							4512266